

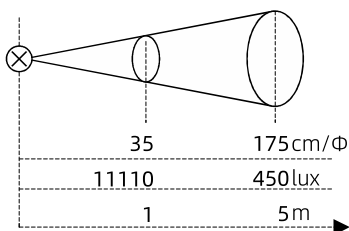
ExMP51R

Explosion Proof Rechargeable LED Handlamp



Description

- Suitable for explosive environment class II zone 1, 2, class III zone 21, 22 and other professional portable lighting.
- Intrinsically safe explosion-proof design.
- The body is made of permanent anti-static, anti-aging and anti-corrosion high-strength alloy plastic injection molding, compact and lightweight, easy to carry.
- Professional optical lens design, soft illumination, uniform spot, in line with GB 30734 fire protection standard.



Parameters

Certifications:	IECEX, ATEX
Ex mark:	IECEX: Ex ib IIC T4 Gb; Ex ib IIIB T130°C Db ATEX: Ex II 2 G Ex ib IIC T4 Gb Ex II 2 D Ex ib IIIB T130°C Db
Usage:	II Zone 1/2, and III Zone 21/22
Working ambient temp.:	-20°C ≤ Ta ≤ +55°C
Ingress protection:	IP66/67
CCT:	6500K
Luminous flux:	≥400lm (strong mode), ≥200lm (work mode), ≥200lm (SOS mode)
Run time:	≥8h (strong mode), ≥12h (work mode)
Beam distance:	210m (strong mode), 140m (work mode)
Battery type:	lithium battery (IEC 61233, IEC 61960)
Battery capacity:	7.2V, 6700mAh (4X18650 lithium batteries)
Charging way:	matched 1000/01-B51 charging base
Charging time:	< 12h
Recharging cycles:	500 cycles
Lifespan:	50,000h (without battery)
Indicator color:	Red, Yellow, Green, White

Note: The luminous flux and continuous discharge time are the values measured under the environment of -20°C ≤ Ta ≤ +55°C.

Features



90° rotational head



Comes with 4 colors light source, switch by knob. ○ ● ● ● ●



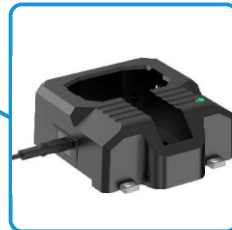
Charging indicator



The transparent part is injection molded together with the lamp cover for a more airtight seal.



Large button, designed for industrial use, is made of durable, chemical-resistant plastic material. 4 grids power display.



Matched charging base, safer and more reliable

Order specifications

Illustration	Description	Weight (g)	Order No.
	Explosion Proof Rechargeable LED Handlamp	960	ExMP51R
	Explosion Proof Rechargeable LED Handlamp + Charging base	1367	ExMP51R+B51-□

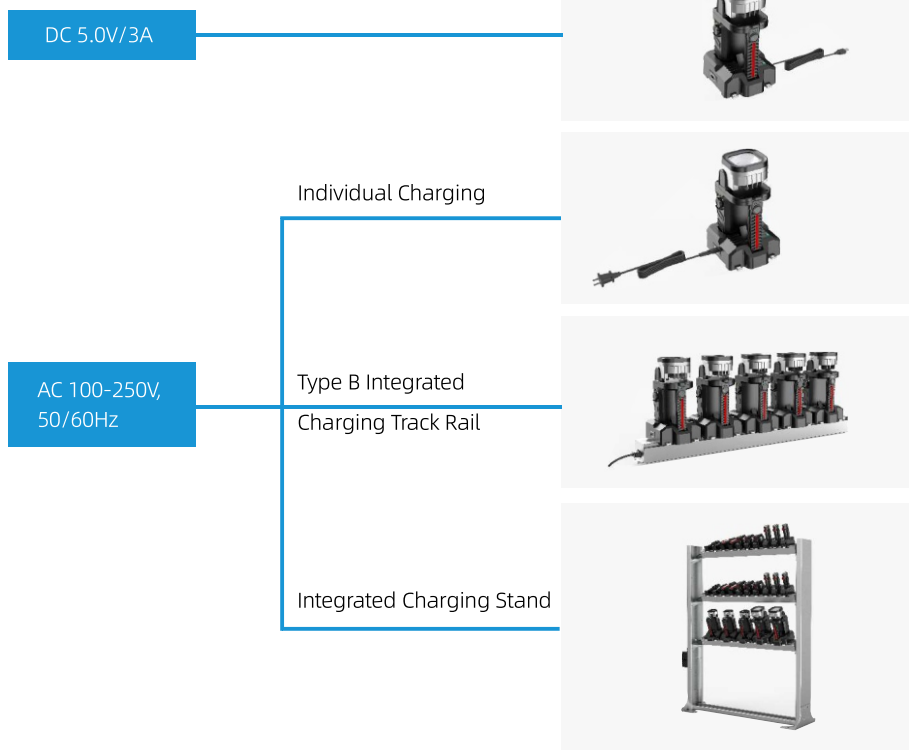


Code of plug

Note: Users can choose type B integrated charging track rail and integrated charging stand. Please see pages 04 and 05 for details.

Charging system

- ExMP51R is equipped with a special charging base to ensure safe use. The charging base has a charging indicator light, red means charging, green means fully charged.
- The charging base has 3 charging ports - AC 100-250V/3A, DC 5.0V/3A and a matched integrated charging port at the bottom. Safe, simple and convenient.
- This product is suitable for type B integrated charging track rail.



Note: For technical parameters of integrated charging track rail and integrated charging stand, please refer to pages 04 and 05.

Spare parts

Illustration	Description	Weight (g)	Order No.
	304 stainless steel	435	1000/11-03-01
	/	30	1000/11-02-01
	7.2V, 6700mAh	230	1000/05-R51-Ex
	Input voltage/current: DC 5.0V/2000mA	94	1000/12-01
	Input voltage/current: AC 100-250V/3000mA Input voltage/current: DC 5.0V/3000mA	394	1000/01-B51-□

GB
 EN
 BS
 ANSI
 AS
 JIS

Code of plug

Outline dimension (unit: mm)

